

QEye

Installation Guide





Model

QE-100

Installation Diagram

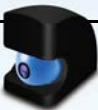



QEye

- 1 QEye x1 
- 2 QEye Wet Side Magnet x1 
- 3 Mini USB Port x2

(Mini USB Ports can be connected either with power adapter or with QShooter.)

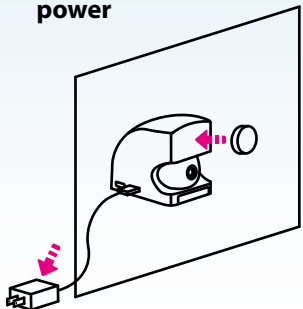


Caution : Risk of Injury from Strong Magnets

Item	Pictures	Description
QEye		WiFi Viewing Aquarium
Wet Side Magnet for QEye		Mount QEye on The Tank (Max. Tank Thickness: 0.75 inch/19mm)
Power Adapter		Universal Power Supply
Power Adapter Cable 200 cm		Connect QEye with Power Adapter

Installation (1~3)

1. Mount QEeye on the aquarium and connect power



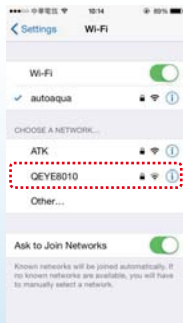
2. Download QSmart APP



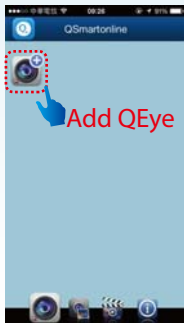
3. Set up AP Mode

3-1. Tap setting to connect QEeye SSID

(SSID: QEYE * * * * , Password: 12345678)



3-2. After connection, go back to QSmart APP and tap "Add QEye"



3-3. Add QEye (3 Options)

I. Key in QEye ID Directly

or

II. Scan QR Code

or

III. LAN Search

*Remark

QEye ID & QR Code
are on the bottom
of QEye.

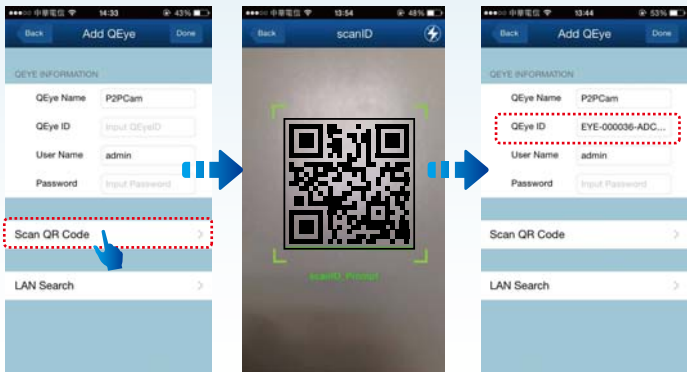


I. Key in QEye ID

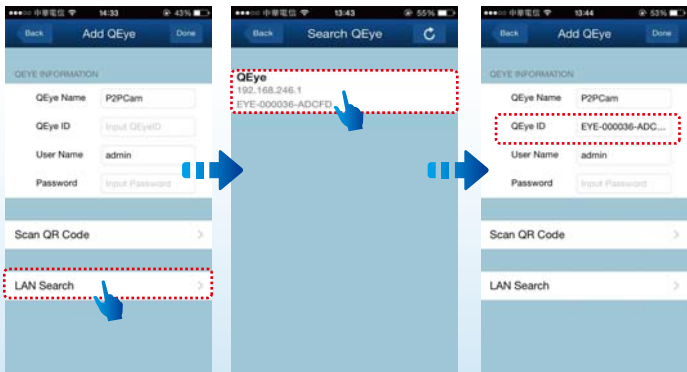


Installation (3)

II. Scan QR Code (Generate QEye ID Automatically)



III. LAN Search (Recommendation)



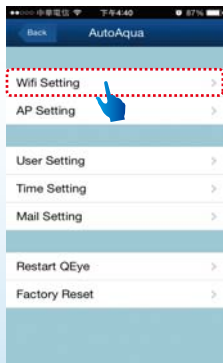
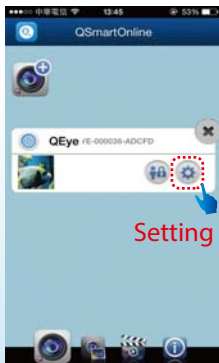
3-4. Use default User Name and password to tap done

(User : admin, Password:)



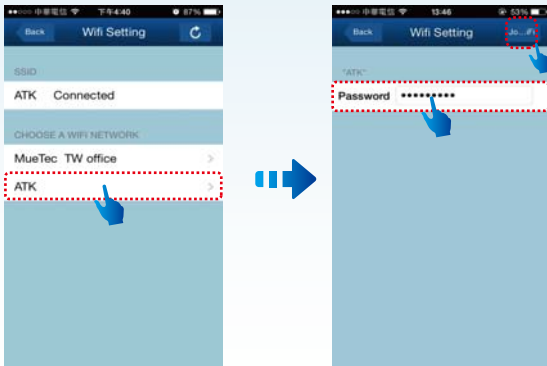
4. Set up IP Mode from AP Mode

4-1. Tap setting and then go to WiFi setting



Installation (4)

4-2. Choose your WiFi Router, key in password and tap join

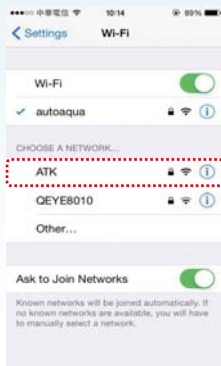
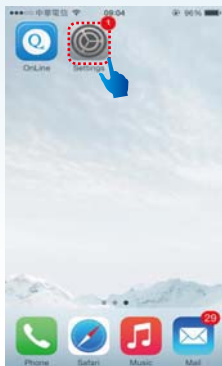


4-3. WiFi setting is done



Shows WiFi setup successfully and will restart
(Please wait for a few minutes)

4-4. Go back to setting and choose your WiFi again
(Choosing 3G or 4G / LTE are ok as well)



5. Wait for a few minutes and tap QSmart APP



Installation (6)

6. Tap the picture to enjoy viewing online



*Remark



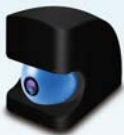
Blue light : QEye connects successfully.



Red Light : QEye does not connect successfully.



Gray Light : QEye is not online.



QEye

1. Power Input : 100-240 VAC 50 / 60 HZ
2. Power Output (USB) : 5 V 2000 mA
3. Power Consumption : 5 W (Max.)
4. QEye Size : 60 mm x 75 mm x 86 mm
(Width x Height x Depth)
5. Wet Side Magnet Size : 30 mm x 16 mm
(Diameter x Depth)
6. Max. Tank Thickness : 0.75 inch (19.0 mm)

Notice

1. Please read the manual in detail before installation.
2. Keep QEye dry and avoid any contact with water to prevent any malfunction.
3. Strong Magnets might carry the risk of injury. Keep magnet away from objects sensitive to magnets.



qsmartonline.com

FCC Statement

This equipment has been tested and found to comply with the limits for a Class B digital device, pursuant to Part 15 of the FCC Rules. These limits are designed to provide reasonable protection against harmful interference in a residential installation. This equipment generates uses and can radiate radio frequency energy and, if not installed and used in accordance with the instructions, may cause harmful interference to radio communications. However, there is no guarantee that interference will not occur in a particular installation. If this equipment does cause harmful interference to radio or television reception, which can be determined by turning the equipment off and on, the user is encouraged to try to correct the interference by one or more of the following measures:

- Reorient or relocate the receiving antenna.
- Increase the separation between the equipment and receiver.
- Connect the equipment into an outlet on a circuit different from that to which the receiver is connected.
- Consult the dealer or an experienced radio/TV technician for help.

This device complies with part 15 of the FCC Rules. Operation is subject to the following two conditions:

- This device may not cause harmful interference
- This device must accept any interference received, including interference that may cause undesired operation.

Changes or modifications not expressly approved by the party responsible for compliance could void the user's authority to operate the equipment.

This equipment complies with FCC radiation exposure limits set forth for an uncontrolled environment. This equipment should be installed and operated with minimum distance 20cm between the radiator & your body.

More Information
For Instructions

